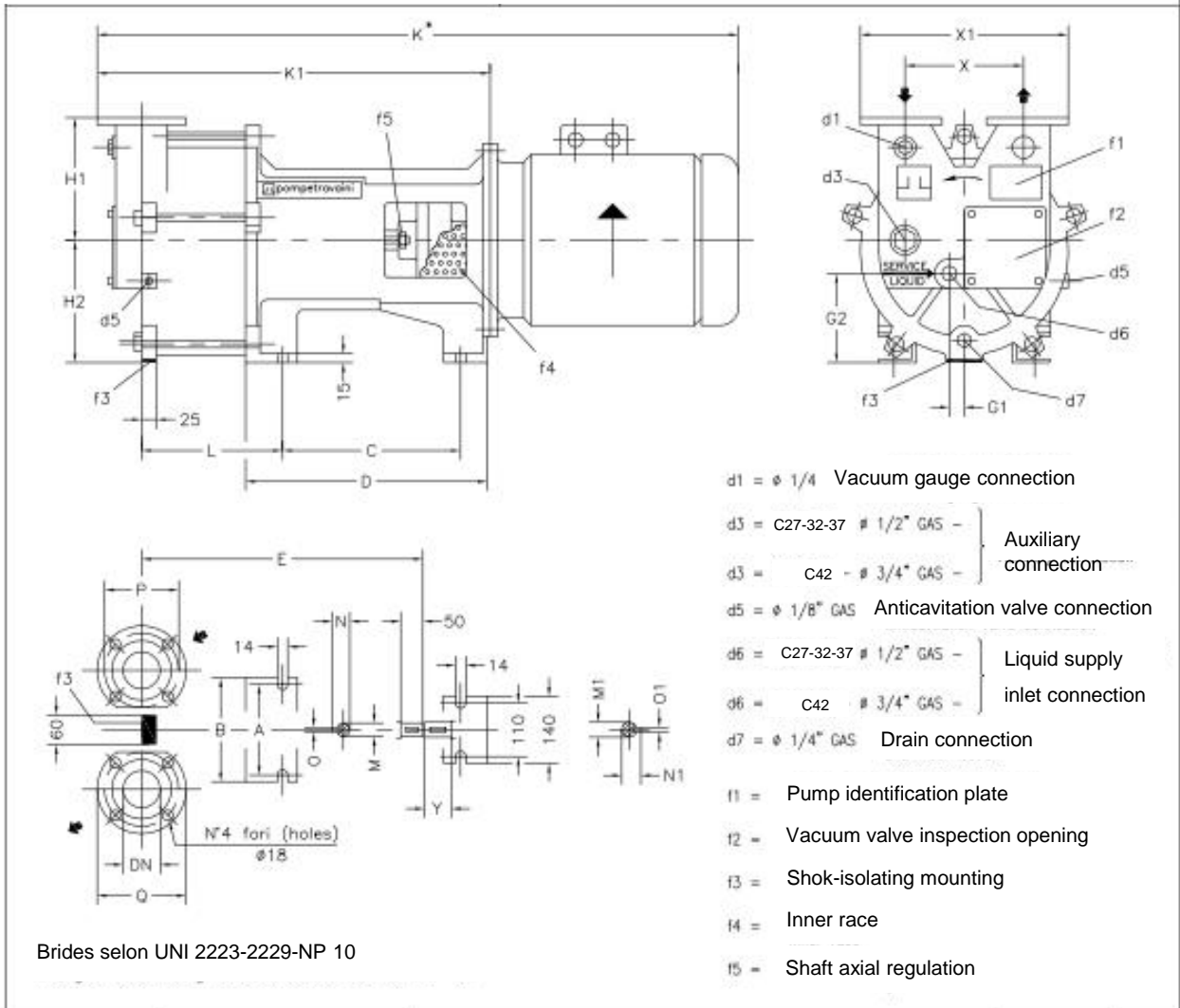


DELTA C27-C32-C37-C42



Pump type	4 poles motor IP 55 V. 220-240/380-415						Pump														FLANGES			Weight (*)							
	Type	KW	Hz	M1	N1	O1	A	B	C	D	E	G1	G2	H1	H2	K	K1	L	M	N	O	X	X1		Y	DN	P	Q			
Delta C27	100 L	3	50							346						802	491	139													62
	112 M	4	60	28	31	8	185	215	236	317			160		160	831	514		28	31	8			60						64	
Delta C32	132 S	5,5	60							369	0		165			914	536	162				180	330		40	110	150		69		
			50																												
Delta C37	132 M	7,5	60	38	41	10	216	260	332	413	481		180		180	1021	643	200	32	35	10			80						78	
			50									499	29	130	180		1047	669	219				200	365		50	125	165		88	

* Not binding dimensions according to installed motor make

Schematic drawing - Dimensions in mm. with tolerances according to EN 735-1995, weights in kgs., referred to pump in Cast Iron (GH) construction without motor, not binding.

IG 201311	PE-DELTA-C-27/32/37/42 Rev 0
--------------	---------------------------------